

Caring for you



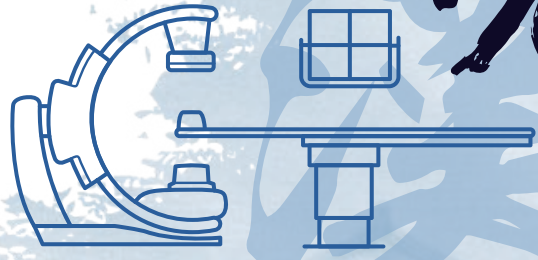
Servicio y Equipamiento SERQUIP Cia. Ltda.



NeuAngio 30F

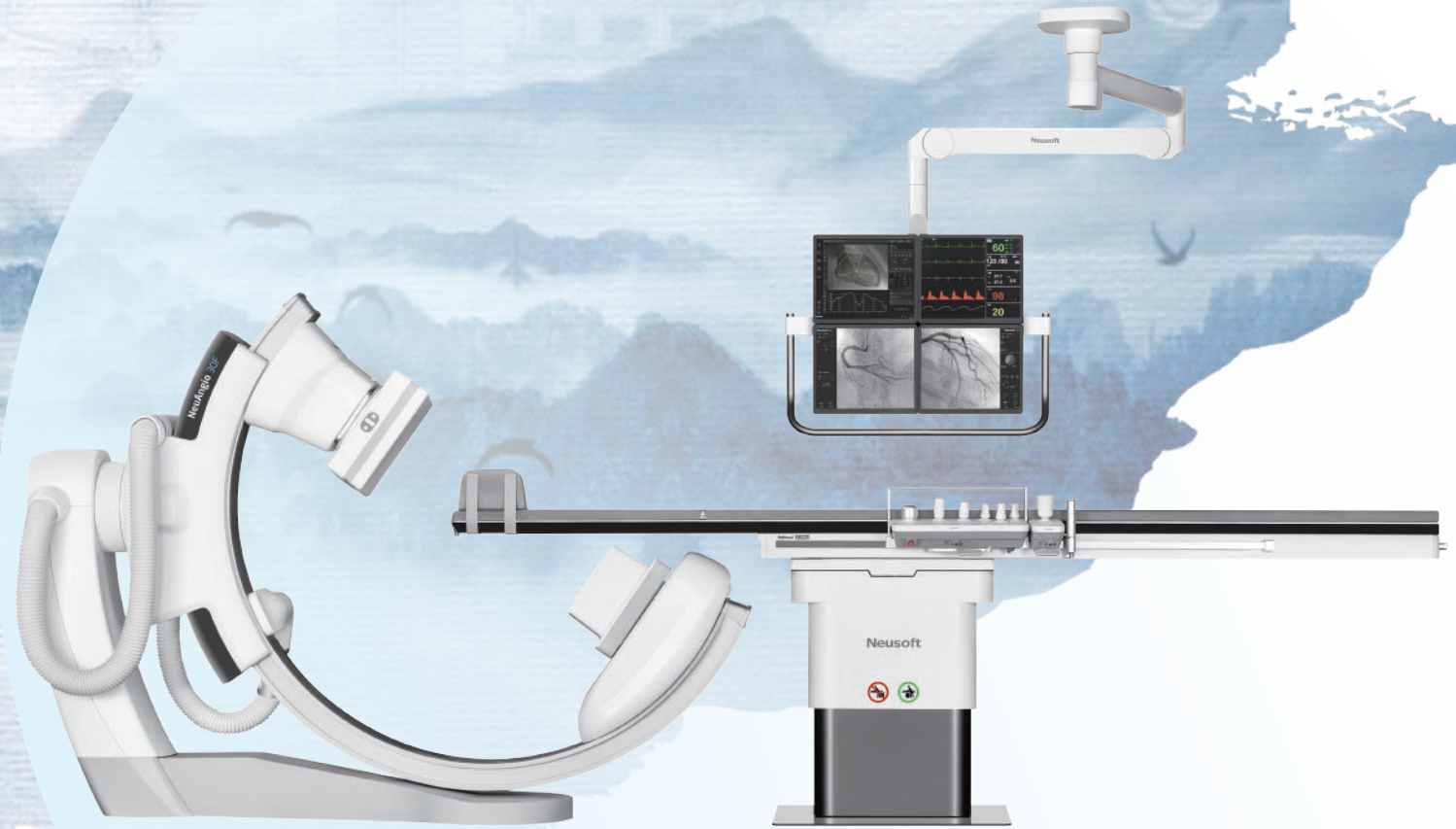
Medical Angiography X-ray System

光耀中华 武安天下



NeuAngio 30F

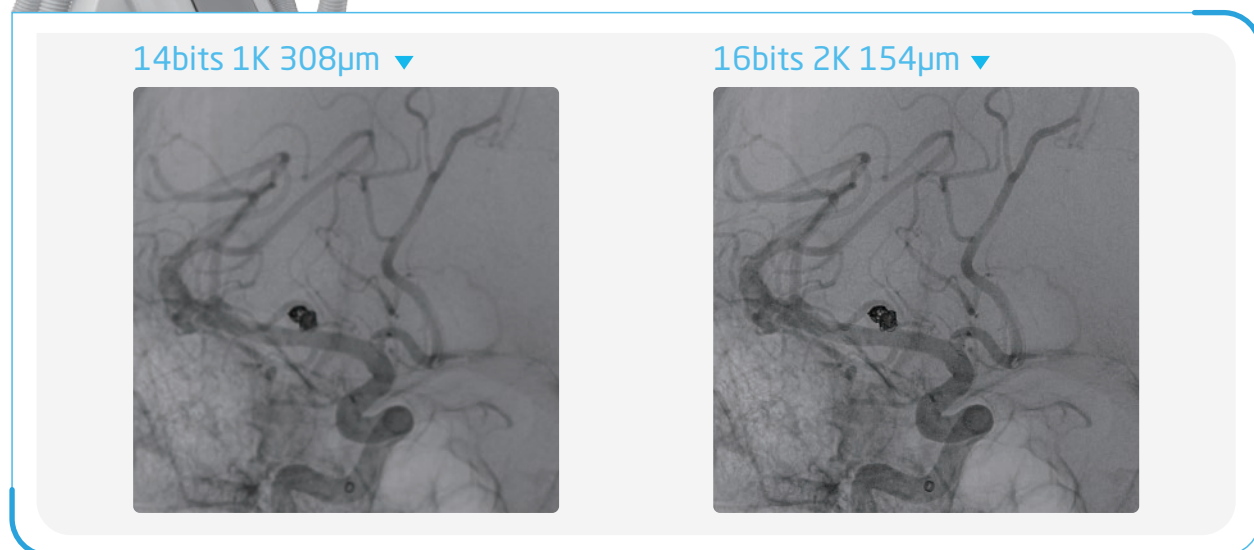
State-of-the-art floor mounted angiography system





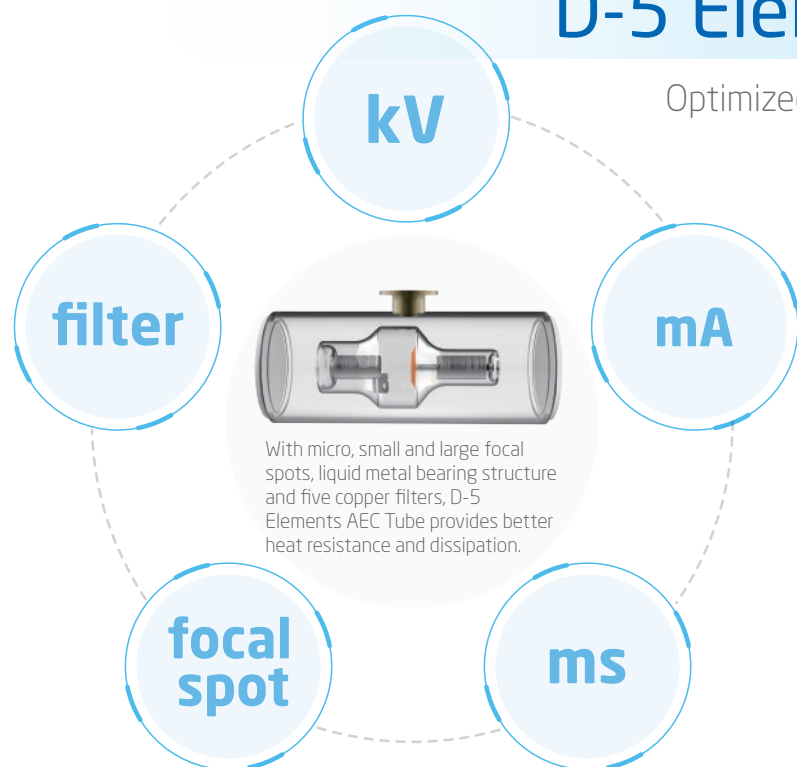
HD Digital Flat Panel Detector

Full **16bit + 2K** digital imaging chain, completing one-stop advanced processing flow of image acquisition, transmission and storage



D-5 Elements AEC Tube

Optimized balancing between radiation dose and image quality



Hyper Speed C-arm Gantry

Intelligent UI Control Module

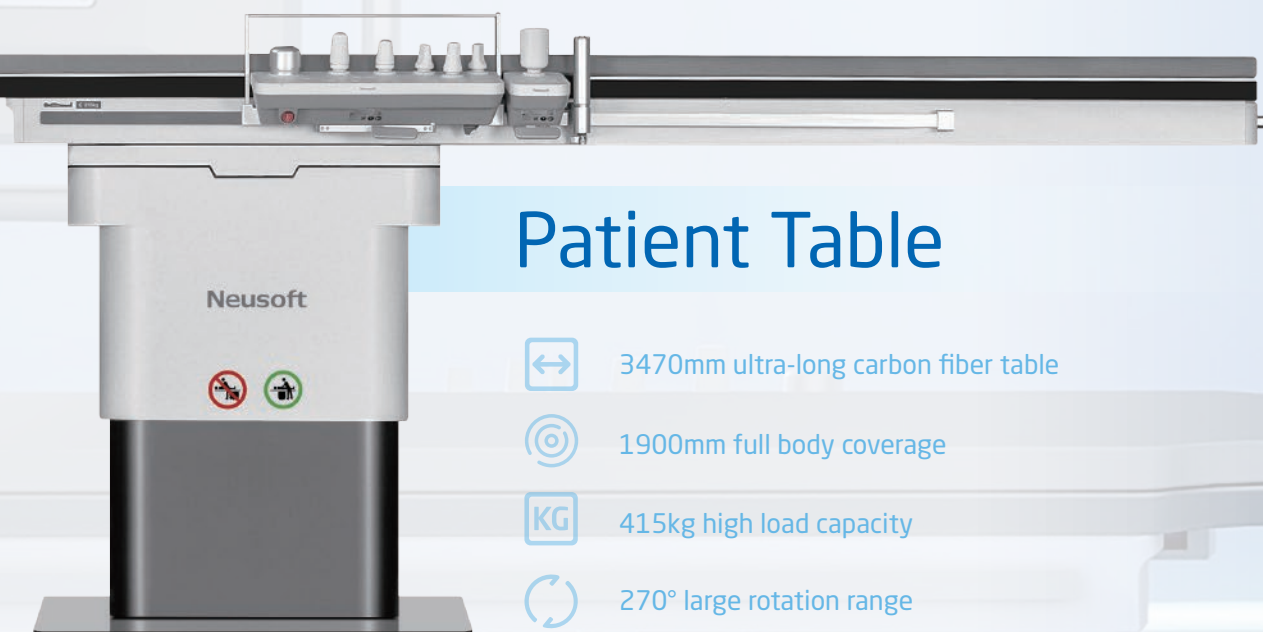


- Multilingual interface
- Simple and efficient



- Concave-convex buttons
- Flexible joystick
- Easy-to-use TMC design
- Equipped with M-Organ Choice

Patient Table



- ↔ 3470mm ultra-long carbon fiber table
- ◎ 1900mm full body coverage
- KG 415kg high load capacity
- ↻ 270° large rotation range



Advanced Clinical Function



- M-ParaVision
- Coronary Swing
- SpinDR/DSA
- Stepping-Composing



- Glorious Stent
- Coronary Swing
- Spin DSA
- 3D
- Dual Volume
- MPR
- Glorious 3D Roadmap*
- Glorious CT*
- Glorious Atlas*

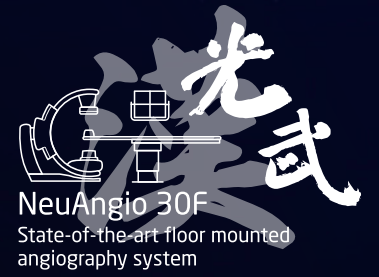


NeuAngio 30F
State-of-the-art floor mounted angiography system

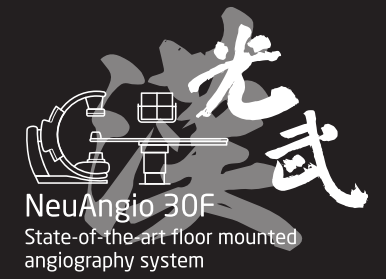
*Trial version, working in progress



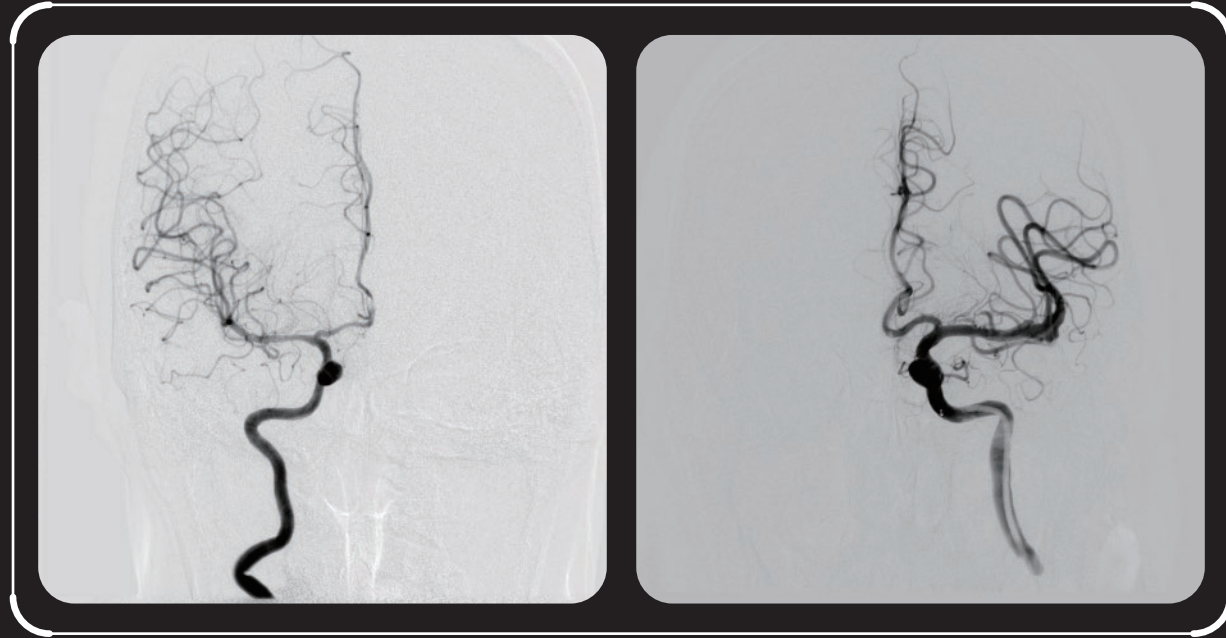
IDM Platform



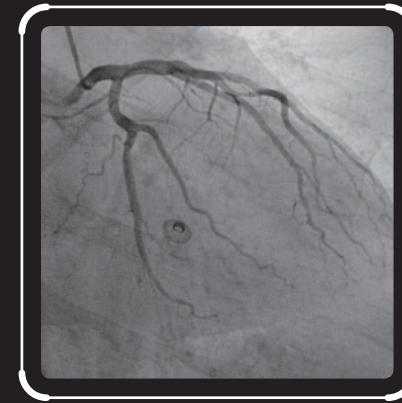
Clinical Gallery



Cerebral Angiography ▼



Left Coronary Angiography ▼



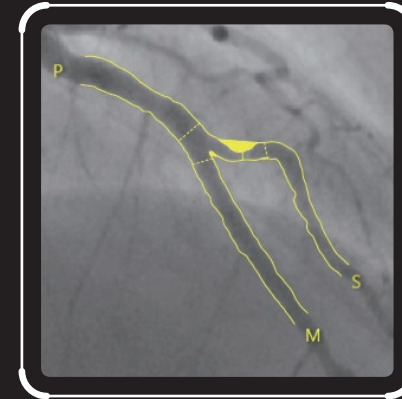
Right Coronary Angiography ▼



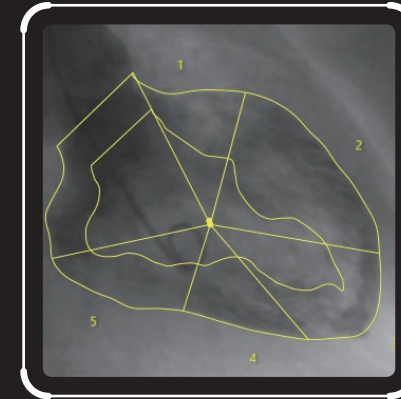
Lower Extremity Arteriography ▼



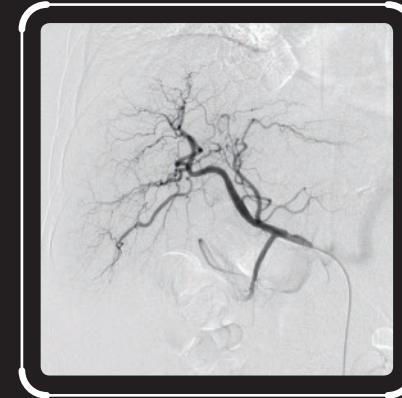
QCA ▼



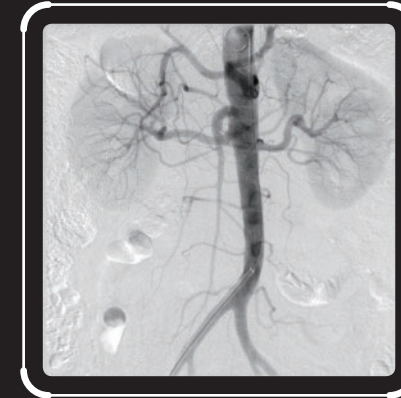
LVA ▼



Hepatic Arteriography ▼



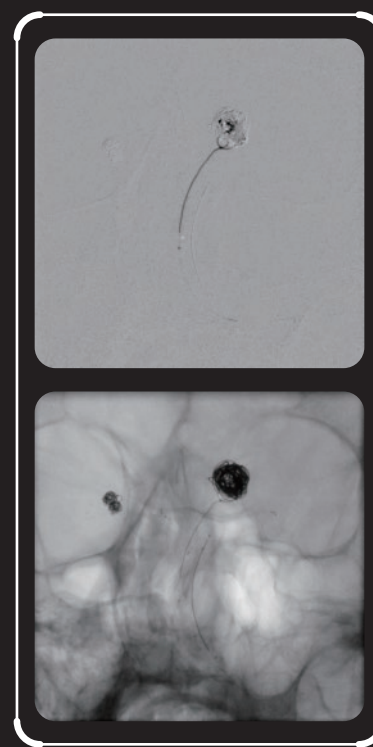
Abdominal Aorta Angiography ▼



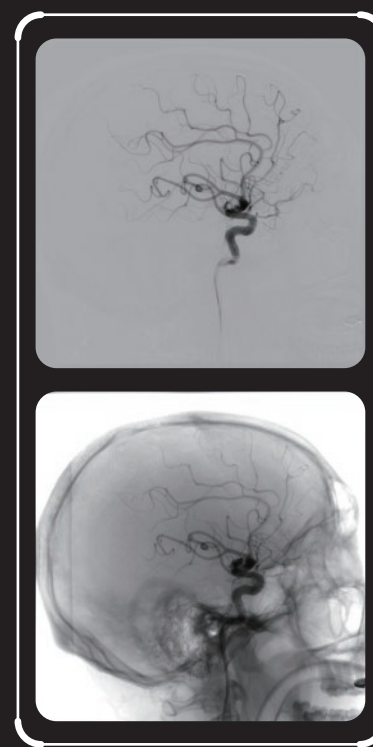
Roadmap ▼



Coil Roadmap ▼

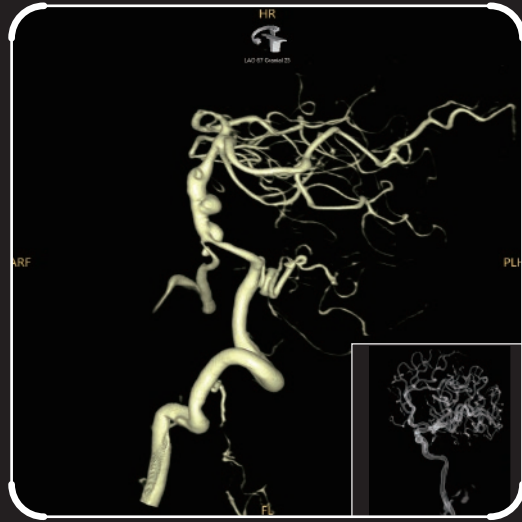


M-ParaDSA ▼

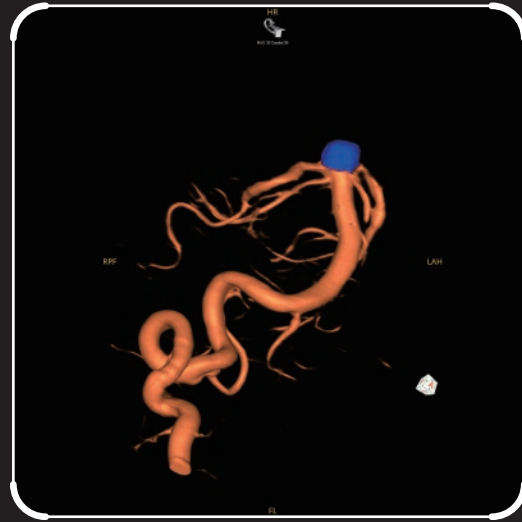


Clinical Gallery

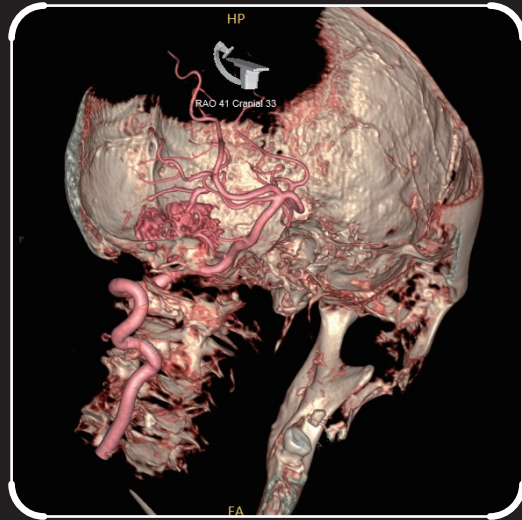
VR ▼



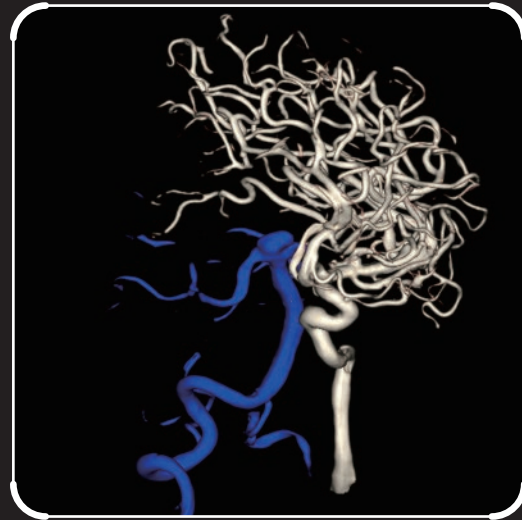
Dual Volume ▼



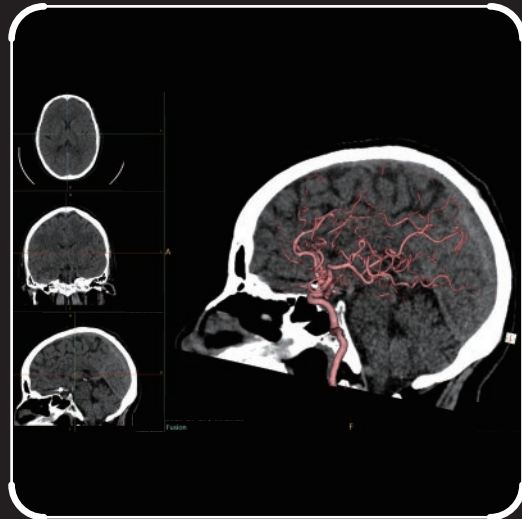
Dual Volume ▼



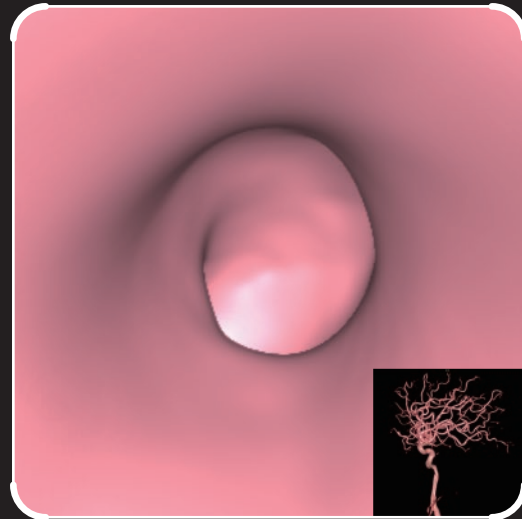
Glorious Dual Vessel ▼



Glorious Fusion ▼



Glorious Endo* ▼



光武
NeuAngio 30F
State-of-the-art floor mounted
angiography system



* Trial version only, working in progress



Neusoft Global Service & Logistics Network



After-sales service and support

- Remote service capabilities bring Neusoft expertise to you IMMEDIATELY, no matter where you are!
- Identifying and correcting PROMPTLY and PROACTIVELY, minimizing downtime and patient inconvenience.
- Global logistics network enables fast response regarding parts and supplies.

* Note: The contents of this publication and the listed parameters are for reference only and not intended as legal offers or commitments. Neusoft Medical Systems reserves the right to modify the contents, design, specifications and options described herein without prior notice, and will not be liable for any consequences resulting from the use of this publication. Please contact your local Neusoft sales representative for the current information. The specific sales product configuration is subject to the actual contract signed by Neusoft.

* Not available in the United States.